

**ALL-MAKES PARTS AND SERVICE**

EXPECT MORE SAVINGS — MAY THROUGH JUNE

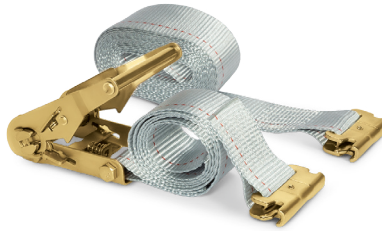


### LOAD BAR

PN: 9453001

- Steel load lock with PVC footpad
- 89"– 104" Length
- X-Ref: Ancra 48407-10, Kinedyne 10085

**\$20<sup>99</sup>**



### E-TRACK RATCHET STRAP

PN: 944E2X16

- 2" x 16' Length
- Working load limit: 1,333 lbs
- X-Ref: Ancra 48672-14, Automann 573.ET16, Kinedyne 641601

**\$6<sup>68</sup>**



### MATTRESSES

7" Foam with Grey Pinstripe Cover

PN: RTMAT38807

- 38" x 80" x 7"
- X-Ref: MF388065P, FLT36807F, TK3880

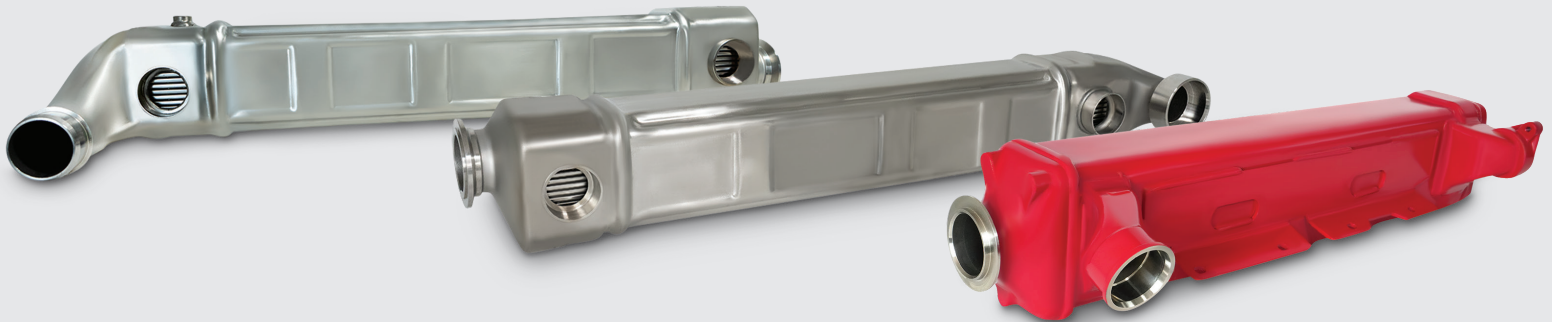
**\$115<sup>00</sup>**

PN: RTMAT42807

- 42" x 80" x 7"
- X-Ref: MF428065P, 2513885C1, TK4280

**\$145<sup>00</sup>**

## ROADWARRIOR EGR COOLERS AT A GREAT PRICE



### ROADWARRIOR EXHAUST GAS RECIRCULATION COOLERS

PN	APPLICATION	OEM X-REF	PRICE
EGR-00CU-01	Cummins®	4352360	\$1,093.81
EGR-00DE-01	Detroit Diesel®	EA4721400475	\$1,248.00
EGR-00DE-02	Detroit Diesel®	EA4731400575	\$1,625.00

# SAVE ON RAIN-X LONGITUDE WIPER BLADES

Rain-X® Longitude™ Professional wiper blades are available in twelve sizes. The revolutionary Rain-X Longitude premium wiper blade contours to the curvature of your windshield to provide even wiping pressure along the full length of the blade. The rubber blades are more resistant to cracking, easy to install and provide all-weather performance.



PN	DESCRIPTION	TRICO X-REF	ANCO X-REF	PRICE
830314	14" Rubber Wiper Blades	31-14	—	\$22.79
830315	15" Rubber Wiper Blades	31-15	91-15	\$22.79
830316	16" Rubber Wiper Blades	31-16	91-16	\$22.79
830317	17" Rubber Wiper Blades	31-17	—	\$22.79
830318	18" Rubber Wiper Blades	31-18	91-18	\$22.79
830319	19" Rubber Wiper Blades	31-19	91-19	\$22.79
830320	20" Rubber Wiper Blades	31-20	91-20	\$22.79
830321	21" Rubber Wiper Blades	31-21	91-21	\$24.49
830322	22" Rubber Wiper Blades	31-22	91-22	\$24.49
830324	24" Rubber Wiper Blades	31-24	91-24	\$24.49
830326	26" Rubber Wiper Blades	31-26	91-26	\$24.49
830328	28" Rubber Wiper Blades	31-28	91-28	\$25.49



## RIG TOUGH MUDFLAPS

PN: GT-2424CD

- 24" x 24", Black rubber, chevron
- 1/4" Thickness
- X-Ref: KR062424F100, PAC24X24-4

**\$12<sup>99</sup>**

PN: GT-2436CD

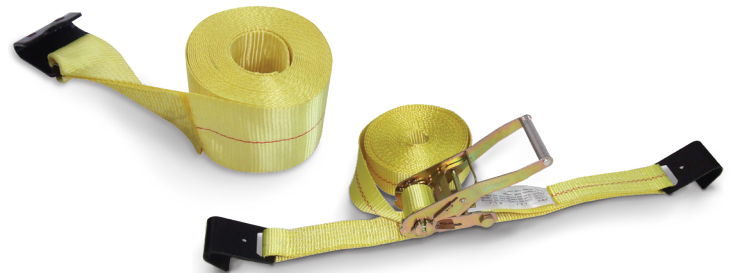
- 24" x 36", Black rubber, chevron
- 1/4" Thickness
- X-Ref: KR062436F100, PAC24X36-4

**\$14<sup>50</sup>**

PN: GT-2430CD

- 24" x 30", Black rubber, chevron
- 1/4" Thickness
- X-Ref: KR062430F100, PAC24X30-4

**\$13<sup>99</sup>**



## CARGO STRAPS

PN: 9446001

- 4" x 30' Polyester with flat hook
- Unit-rated strength: 7.5 tons
- X-Ref: Ancra 43795-10-30

**\$17<sup>99</sup>**

PN: 9446002

- 2" x 30' Polyester with flat hook and ratchet
- Unit-rated strength: 4.6 tons
- X-Ref: Ancra 45982-11

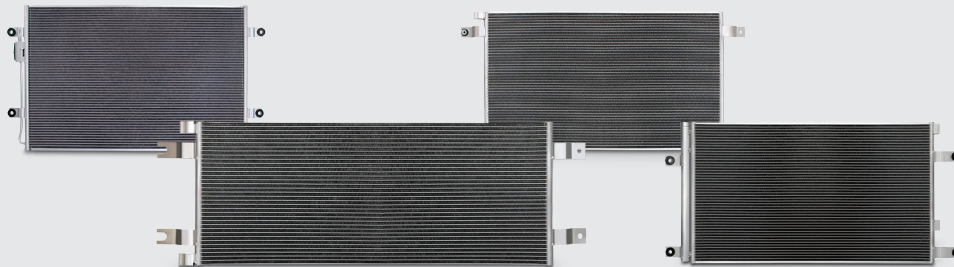
**\$19<sup>99</sup>**

# TAKE ADVANTAGE OF SELECT GROTE PRODUCT SPECIALS



PN	PRODUCT	DESCRIPTION	PRICE
01-G600-78	Hi Count® 6" Oval LED Stop/Tail/Turn Light Kit	Yellow	\$71.95
01-4729-90	SuperNova® 3" Thin-Line LED Clearance/Marker Light	Yellow	\$16.00
47072	SuperNova® Sealed Turtleback® II LED Clearance/Marker Light	Red, with Built-In Reflector, Male Pin	\$ 9.40
47962	MicroNova® LED Clearance/Marker Light	Red, with Grommet	\$11.00
47973	MicroNova® LED Clearance/Marker Light	Yellow, with Grommet	\$13.50
49332	MicroNova® Dot LED Clearance/Marker Light	Red, PC with Grommet	\$12.50
49333	MicroNova® Dot LED Clearance/Marker Light	Yellow, P2/PC with Grommet	\$12.50
49362	MicroNova® Dot LED Clearance/Marker Light	Red, Dual Intensity, with Grommet	\$14.00
53252	SuperNova® 4" 10-Diode Pattern LED Stop/Tail/Turn Light	Red, Grommet Mount, Male Pin	\$22.50
54622	SuperNova® 4" 10-Diode Pattern LED Stop/Tail/Turn Light	Red, Integrated Flange, Male Pin	\$20.50
60681	MicroNova® Multi-Volt LED License Light	Vertical Mount, Grey	\$19.00
91740	Open Grommet for 4" Round Light	Requires 4-1/2" Diameter Hole, Fits Panel Up to 1/4" Thickness	\$ 1.60

# SELECT NORTHERN RADIATOR A/C CONDENSERS ON SALE NOW



PN	APPLICATION	DIMENSIONS	X-REF	PRICE
9240702	Peterbilt 367, 2008–2011	33-5/8" x 20" x 3/4"	N4778001, PA78001DSP, 3400243	\$263.99
9240715	Peterbilt 325, 330, 335, 340, 365, 367, 2007–2010	34-1/4" x 13-7/8" x 5/8"	CON0024, PA40001DSP, R0440001	\$249.99
9240732	Kenworth T660, W900L, 2008–Newer	26" x 20" x 5/8"	PA83001DSP, N4783001, 3400239, CON0023	\$195.99
9240907	Peterbilt 386, 2008-2009	31-1/2" x 20-1/8" x 3/4"	PA37001BD, PA37001DSP, R0337001	\$256.99
9241615	Volvo VN Series, 1996–2010	32" x 16-3/8" x 7/8"	CON0062, PB12750DSP, 3092918, 7-9070	\$119.99
9246000	Peterbilt 357, 375, 377, 378, 1995–2007, Parallel Flow	28-1/8" x 26-7/8" x 3/4"	PB40150DSP, CON0053, 18-03809, 310043	\$283.99
9260000	Freightliner Cascadia, 2008–2010	34-1/2" x 22-5/16" x 5/8", Short Brackets	A22-62272-000, CON0013, 3400247	\$134.99
9260112	Peterbilt 579, Kenworth T680	34-1/4" x 19-1/2" x 5/8"	3400268, PB09860DSP, Z9206001	\$364.99
9260117	International LT, RH Series, 2018–Newer	34-1/4" x 19-3/8" x 5/8"	2518753C92, 3400272	\$188.99
9260118	Freightliner Cascadia, 2018–Newer	33-7/8" x 21-1/2" x 5/8"	A22-72870-000, CON0087, 3400338	\$188.99
9260126	Peterbilt 579, Kenworth T680, 2022–Newer	33-7/8" x 19-3/4" x 5/8"	PX936001	\$309.99

MAY 13 – 15, 2025

# 2025 CVSA INTERNATIONAL ROADCHECK

In an effort to make all vehicles safe and compliant throughout North America, the Commercial Vehicle Safety Alliance established an annual three-day inspection event. The International Roadcheck is the largest enforcement program for commercial vehicles worldwide, with nearly 15 trucks and motorcoaches inspected every minute.

## > IN 2024, 48,761 INSPECTIONS WERE CONDUCTED IN NORTH AMERICA.

### LEVEL 1 - 29,342



37-step process to check driver credentials and vehicle mechanical fitness

### LEVEL 2 - 10,098



Driver and walk-around vehicle inspection

### LEVEL 3 - 8,303

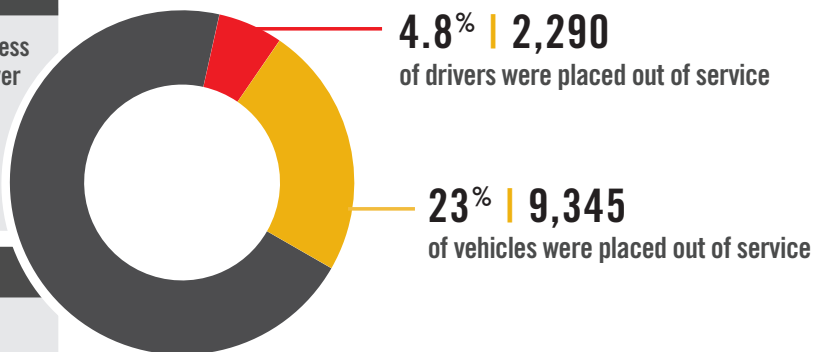


Driver-only inspection

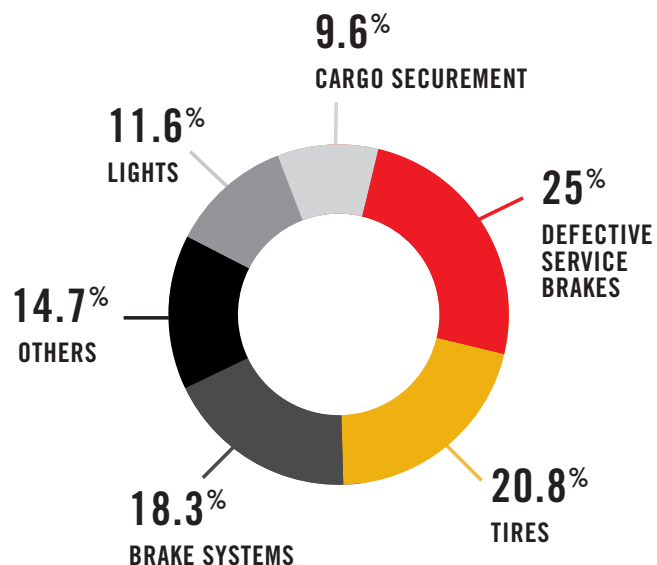
### LEVEL 5 - 1,018



Vehicle-only inspection (may be without driver present)



### TOP 5 VEHICLE OUT-OF-SERVICE VIOLATIONS



### 2025 CVSA INTERNATIONAL ROADCHECK FOCUS:



- Tire Inspection and Maintenance (e.g., low tread depth, air leaks, belt materials, sidewalls and improper repairs)
- False Records of Duty Status (e.g., electronic logging device (ELD), ghost drivers, improper use of personal conveyance and adverse driving conditions, etc.)



READ OUR BLOG  
TO LEARN MORE





# INTRODUCING, A BETTER WAY TO BUY ALL-MAKES PARTS.

JUST WHAT YOU EXPECT FROM RUSH TRUCK CENTERS.



SHOP PARTS  
ONLINE



## TAKE ADVANTAGE OF OUR SERVICE SPECIALS THROUGH JUNE



### Truck or Trailer DOT Inspection

**\$59<sup>99</sup>**

Labor Code: 0000DOT

### Clearance/Marker Light Replacement

**\$24<sup>99</sup>** Each

Labor Code: 00LIGHT



### Mudflap Replacement

**\$29<sup>99</sup>** Each

Labor Code: MUDFLAP

Offers valid May 1 – June 30, 2025 at Rush Truck Centers service locations. Labor Only. Cannot be combined with any other offers. Prices subject to change without notice.